

# **We shall not leave anyone behind: Zambians' perception of persons with disability and their voting preferences**



**Dr Jack Chola Bwalya & Harrison Mwale**







***“Although I have a disability, given the opportunity, I would like to one day become president of the Republic of Zambia.” Judith Lungu***

—Judith Lungu - Extracts from Bwalya’s interview about - Disability & Ethno-Political Dynamics in Contemporary Zambian politics – September 26 2016.



# Why disability & Political Participation?

## Perceptions on disability

- PWDs-worldview
- African/Zambian-perceptions
- Role of Community Based Rehabilitation (CBR) Africa Network (CAN) + other CSO

## Discourses on disability & Politics

- Underrepresented in political life
- Adopt /Introduce new measures (Article 29 of the United Nations Convention on the Rights of PWDs)



# **Worldview-PWDs & Political Participation**

.

# 'FACTS'

World-view: PWDs & Political Participation



1

2012, about 15% of the world's population were living with a disability (Hoffman et al., 2016)

2

This represented, as Mannan et al., (2012) asserts, almost one billion people in the world...

3

who "... face every day inequality, marginalization, and discrimination through inequitable opportunities,

4

...as compared to persons without disabilities" (Mannan et al. 2012, p. 2).

5

The political arena is also tainted with all forms of discrimination and PWDs disproportionately face these discriminations (Williams & Teal, 2017)



# African/Zambian – Ethno-political & cultural dynamics

PWDs/also face discriminations (Franzen, 1990; Mensah et al., 2008; Munsaka, 2012; Officer & Posarac, 2011; Sackey, 2015; Trescher, 2017)..•

# Role of Community Based Rehabilitation (CBR) Africa Network (CAN) + other CSO

## Info/sharing/advocacy

Community Based Rehabilitation (CBR) Africa Network (CAN), among a host of other civil society organisations, have been playing a crucial role in shaping the facilitation of information sharing on disability and Persons with Disability (PWDs) through electronic media such as websites, social media and the radio, and continues to do so today





# Role of Community Based Rehabilitation (CBR) Africa Network (CAN) + other CSO

## Impact on Political Views

- ❑ Divergent opinions concerning PWDs and their place in society raise questions around their impact on political views in Zambia.
- ❑ We use regression analysis to explore the relationship between demographic characteristics and the Zambian peoples' opinions around voting for a political candidate who has a disability.







# Data & Data analysis

## Source of Data

- Afrobarometer Round 5 for Zambia
- Africa's largest public opinion survey – The Afrobarometer survey is an independent non-partisan research project that measures the social, political and economic atmosphere in Africa ([www.afrobarometer.org](http://www.afrobarometer.org)).

## Dependent Variable

- The survey questioned respondents as to whether or not they would vote for a political candidate with a disability. This information is taken as the dependent variable and an indicator to measure the respondents' voting preference. We dichotomised the options into Yes = Vote for a candidate who has a disability for political office and Else = other answers



# Data & Data analysis

## Independent Variable

- We included age, gender, education, place of residence, employment status and media exposure as independent variables

## Explaining independent Variable

- The survey collected educational qualifications of the respondents in ten categories; however, for the present analysis, we collapsed that into three categories

## Explaining Indepen/Variable

- The new categories created are: Low Education (by combining the categories 'No formal schooling', 'Informal schooling only', 'Some primary schooling' and 'Primary school completed'); Middle Education (combining 'Some secondary school/high school', 'Secondary school completed/high school', 'Post-secondary qualifications' and 'Not university'); and High Education (combining 'Some university', 'University completed' and 'Post-graduate').



# Data & Data analysis

## Explaining Indepen/Variable

- ❖ Age of respondents was collapsed into three categories: Young (<25 years); Middle (25-39 years); and Old (more than 40 years). For media exposure, the survey collected information on how often the respondents receive news from the radio, television, newspaper or internet. The options were: 0=Never; 1=Less than once a month; 2=A few times a month; 3=A few times a week; 4=Every day.

## Explaining Indepen/Variable

From this, we created a variable 'media exposure' by adding the scores of the radio, television, newspaper and internet. The total score can be ranged from 0 to 16.



# Key Findings

- 64.2 % of the respondents indicated that they would vote for a candidate with a disability for political office.
- There is a statistically significant difference between young and old age in the inclination to vote for disabled candidates. On the other hand, there is no statistically significant difference between middle age and old age group. Compared to respondents in the younger age group, respondents in the older age group are reported more likely to vote for a disabled candidate.

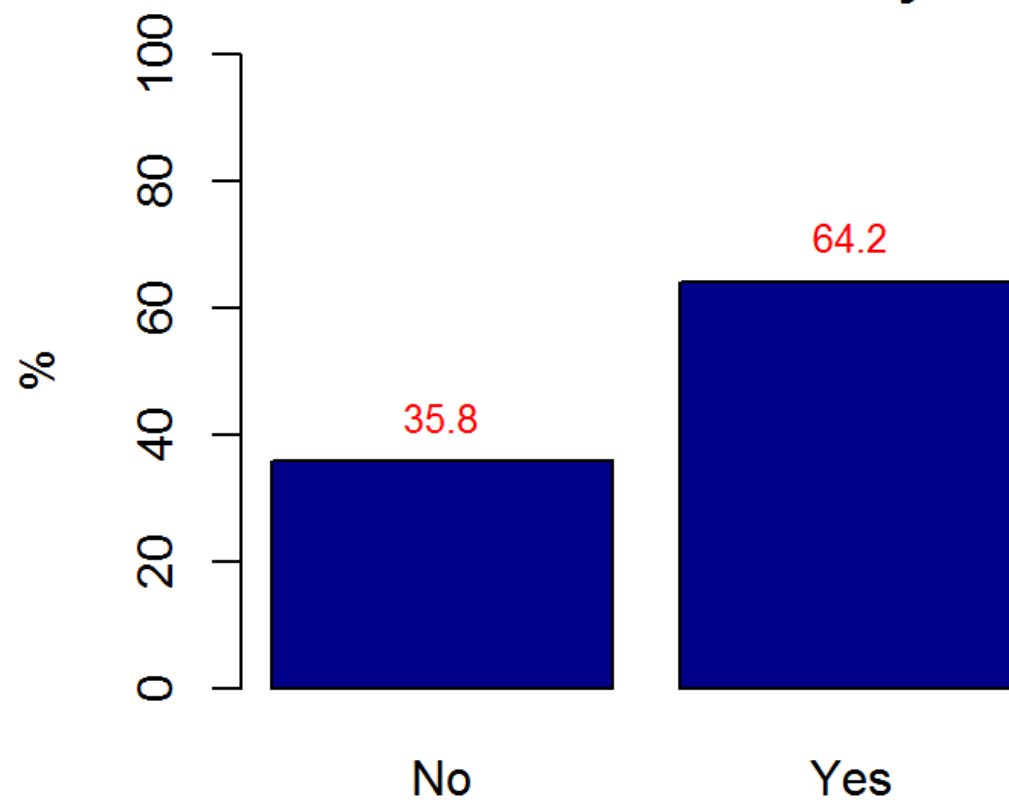


# Key Findings

- Regarding education, it was found that people with middle and high levels of education reported themselves as more likely to vote for a candidate who has a disability for political office.
- Media exposure plays an important role in relation to how Zambians receive information and are informed about disability and persons with disability. For this analysis, media exposure is found not be statistically significant.



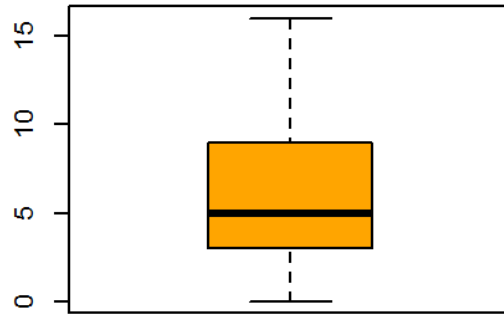
### Voting for a candidate who has a disability



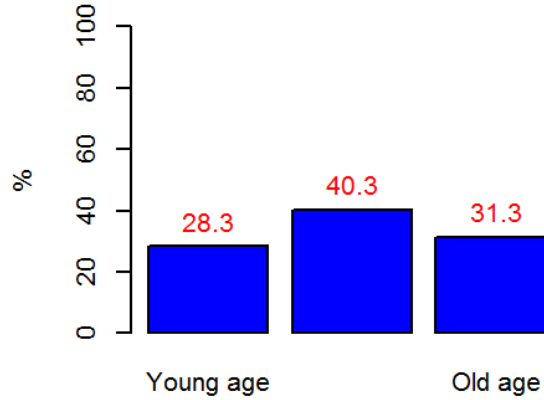


# Descriptive statistics of independent variables

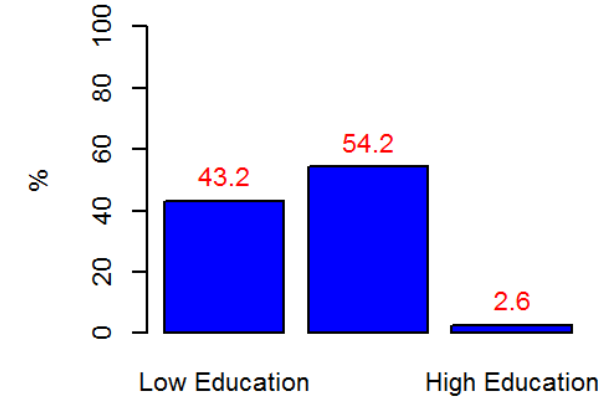
Media exposure



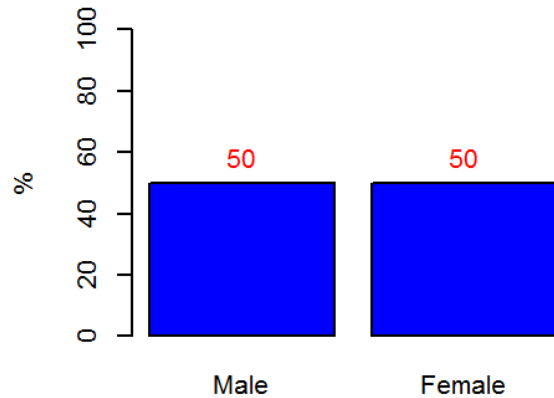
Age



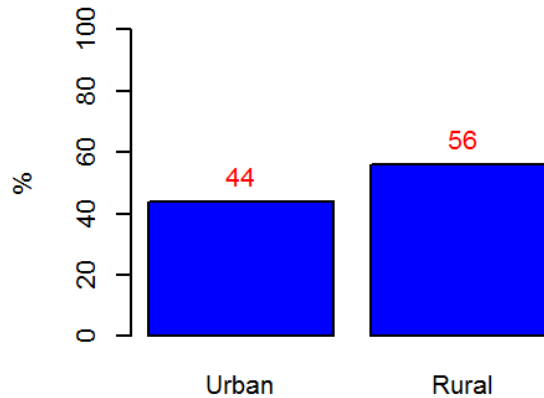
Education



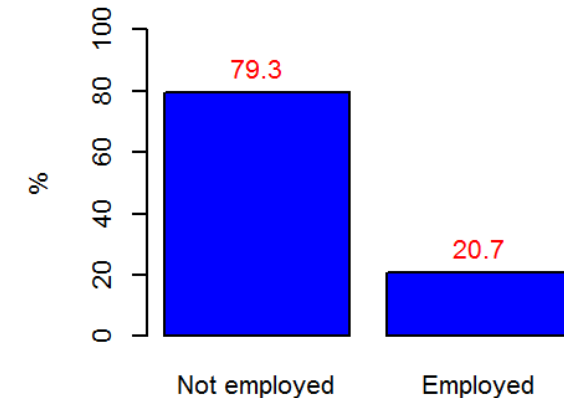
Gender



Urban or Rural Area

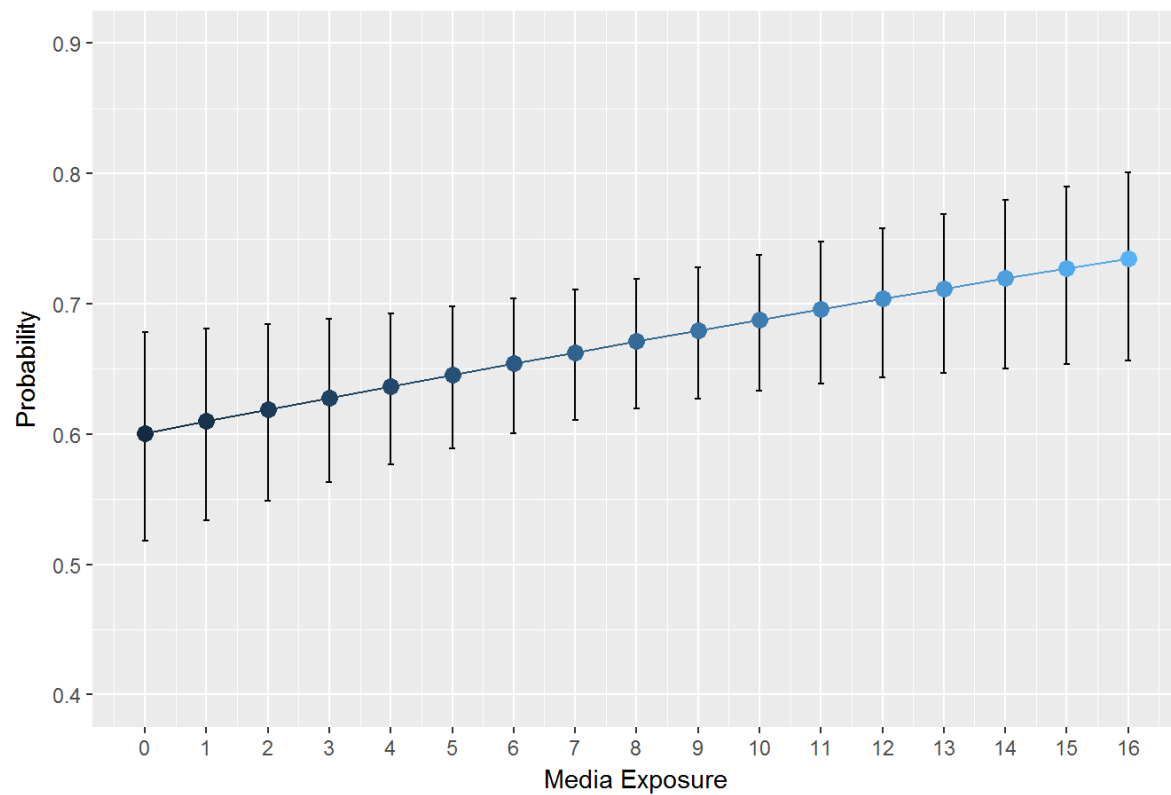


Employment status

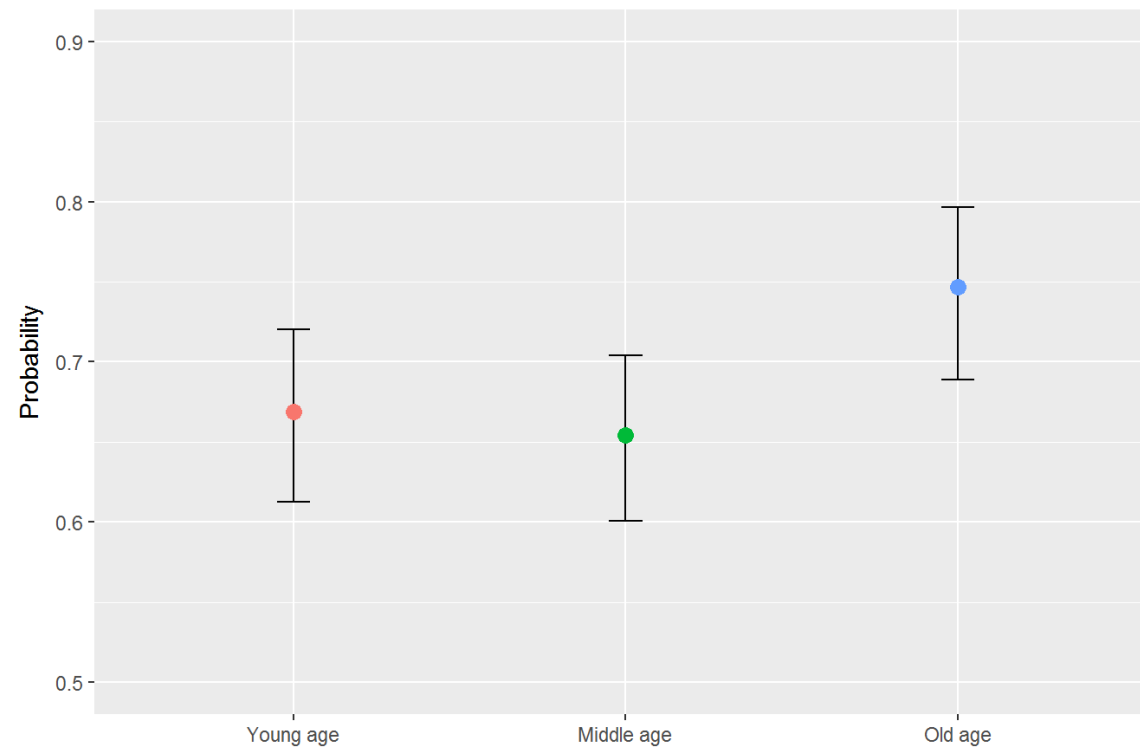


# Estimated Probabilities

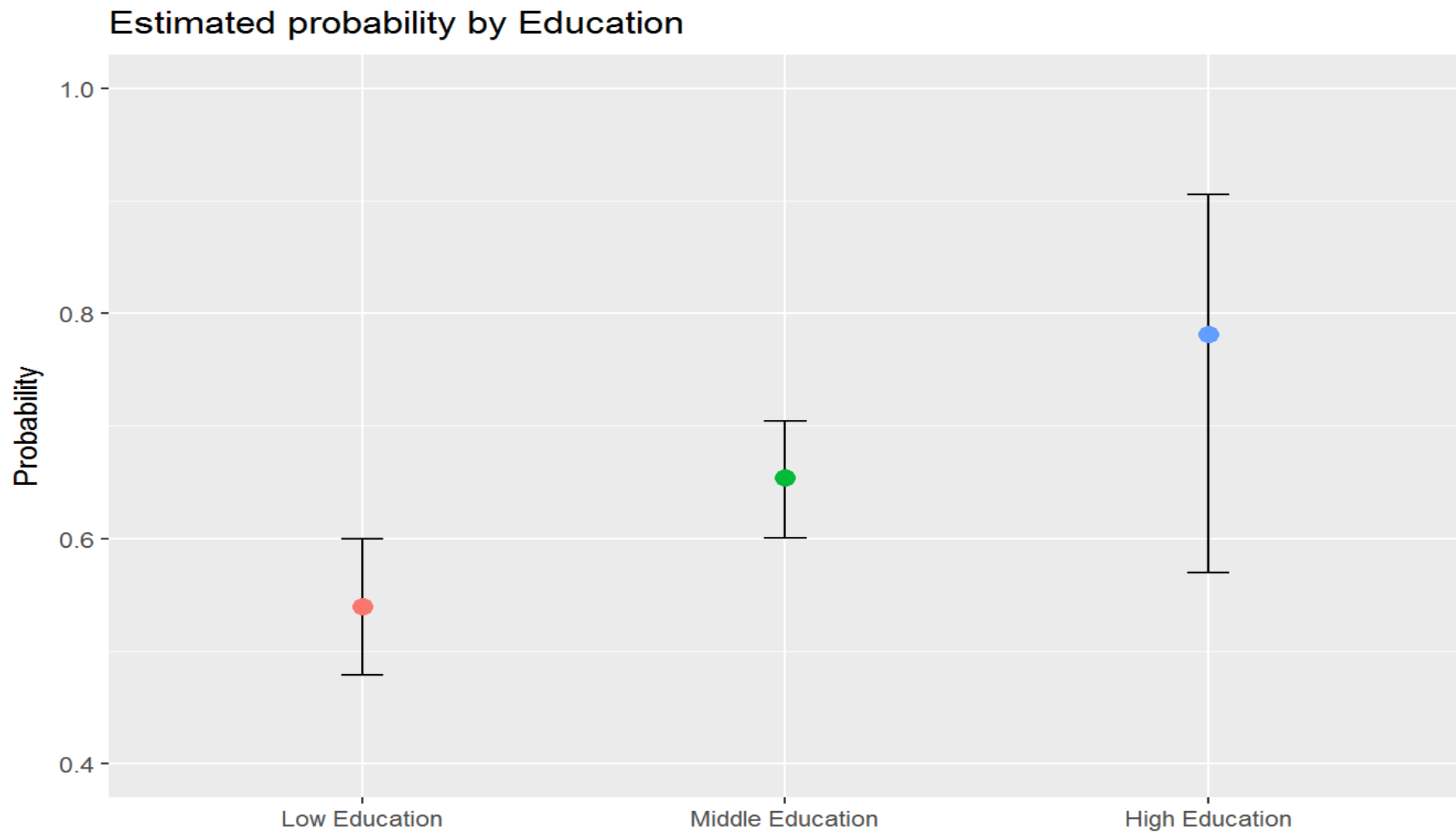
Estimated probability by Media exposure



Estimated probability by Age



# Estimated Probabilities







# Recommendations

- **Zambian government** take a leading role in revisiting existing policies and devising tangible, deliberate and sound new policies aimed at raising the profiles of PWDs in the country, and most especially amongst the poorly educated, the young and middle-aged people of Zambia?

## Inspire

- **CBR + other CSOs** could also devise and formulate results-based programmes which, for example, specifically aim at remedying the social and cultural norms in relation to how PWDs are viewed within traditional Zambian society.

## Action

- **Collective action** – i.e. You and I, Zambian government, CBR + others.